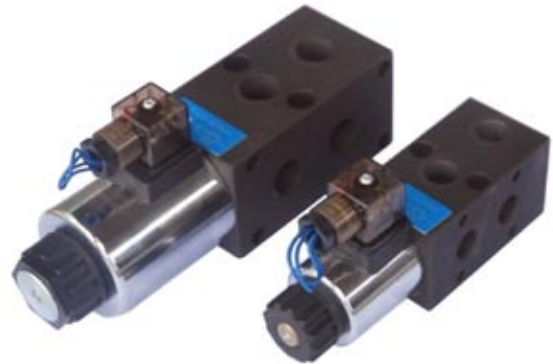


The valve is capable of switching from one circuit to another at a variety of flows and pressures. The valve may be connected to the service ports of a directional control valve and used to direct service line flow to and from either of two separate consumers. If more than two circuits are to be controlled then additional units can be stacked together, minimizing the need for pipes and fittings. Alternatively, the valve can be connected to a pump and used to direct the flow to either one of two different circuits.



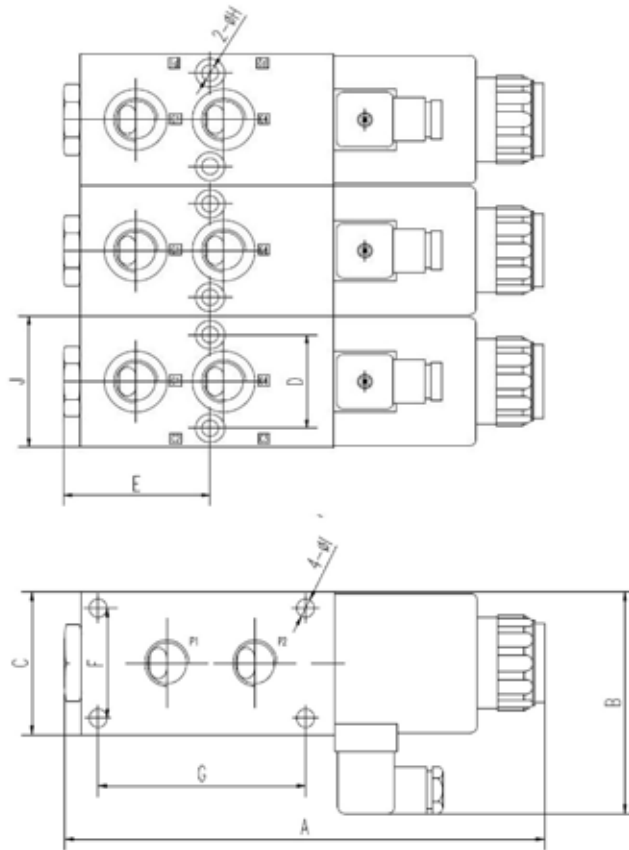
Ordering codes

valve type	spool type	specification	voltage
1	2	3	4

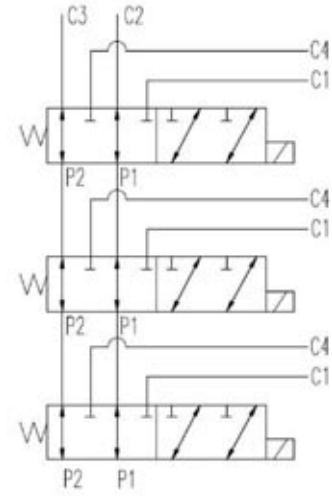
item	collocation	explanation
1	E	Selector valve
2	62	6way/2station
3	12 or 38	BSPP1/2"; 3/8"
4	voltage	DC12/24V, AC110/220, B110/220(rectified)

Technical data

parameter	E6238	E6212
specification		
Max pressure	250bar	
Max flow rate	40L/min	60L/min
Hydraulic fluid	mineral oil, phosphate ester	
Fluid temperature	-20~80°C	
Recommended viscosity	10~400mm ²	



Spool function



	A	B	C	D	E	F	G	H	I	J
E6238	175.2	84	52	36	57.5	38	42	6.4	6	52
E6212	229	100.6	65	46	70	50	99	8	8.4	65

Length unit: mm