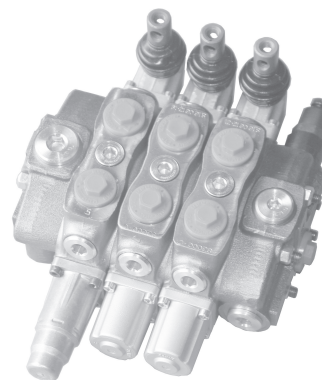


SD8

SD8 Series Sectional Directional Control Valves

SPECIFICATION

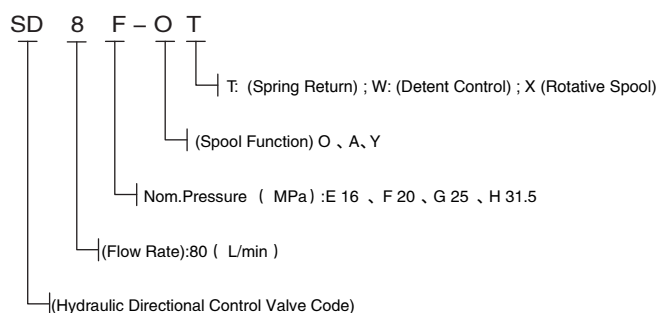
SD8
Port Size P, A & B 1/2" BSPP
Port Size T & C 3/4" BSPP
Nominal Flow Rate 90 l/min
Main Relief Factory Set to 120 BAR (1740 psi)



FEATURES

- ◆ Simple, compact and heavy duty designed sectional valve from 1-14 sections for open and closed centre hydraulic systems.
- ◆ Flow rate: 90l/min, with max pressure 315bar.
- ◆ Joining port: L (screw connection)
- ◆ Spool function options: O,P, Y, A and etc.
- ◆ Nominal diameter: G1/2; G3/4, 7/8-14UNF ,SAE10, 3/4-16UNF, SAE8, M18X1.5
- ◆ Spring side control options: spring control and detent control
- ◆ Lever side control options: manual, pneumatic control, electric and pneumatic control, hydraulic and electric control, hydraulic control and remote control.

MODEL CODE



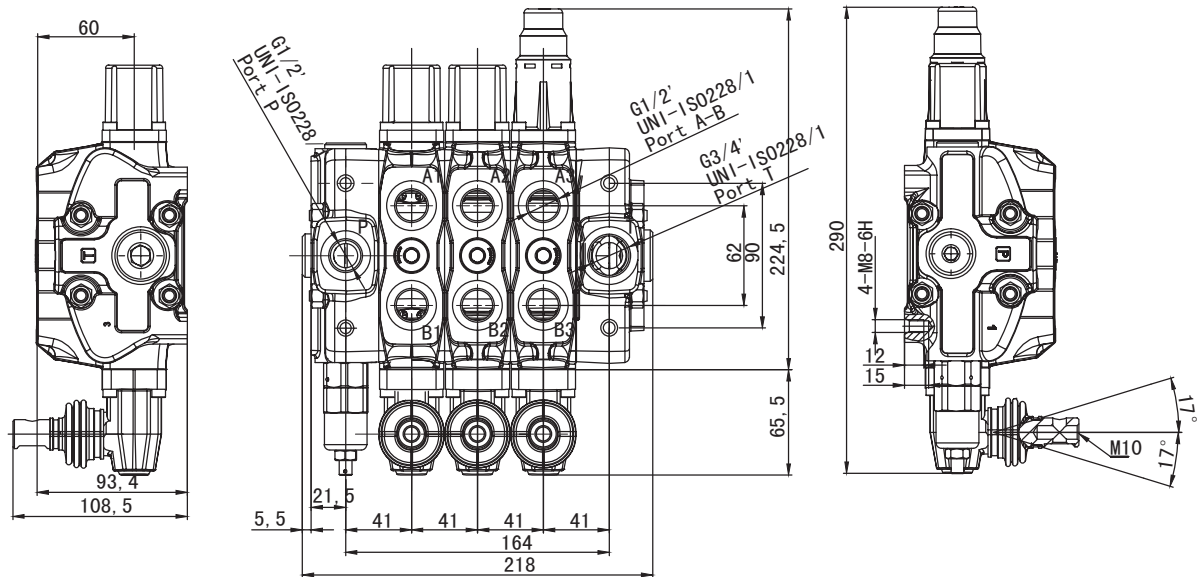
PARAMETERS

(MPa) Nom. Pressure	(MPa) Max. Pressure	(L/min) Nom. Flow rate	(MPa) Back Pressure	Hydraulic Oil		
				(°C) Tem.rang	(mm2/S) Visc.rang	(μ.m) filtrating accuracy
16	31.5	80	≤1	-20 ~ +80	10 ~ 400	≤10

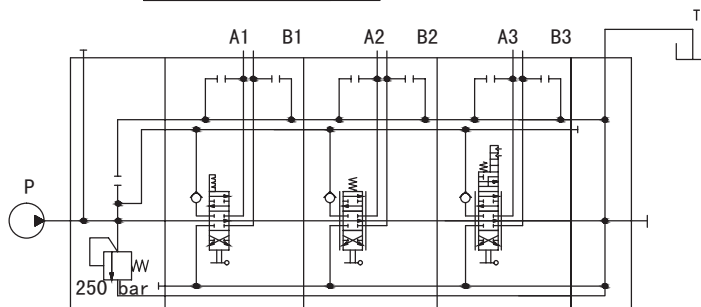
SD8

SD8 Series Sectional Directional Control Valves

SD8 MODEL DIMENSIONAL DATA



HYDRAULIC CIRCUIT

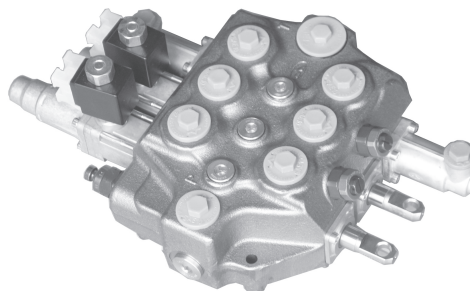


SDM141

SDM141 Series Monoblock Directional Control Valve

SPECIFICATION

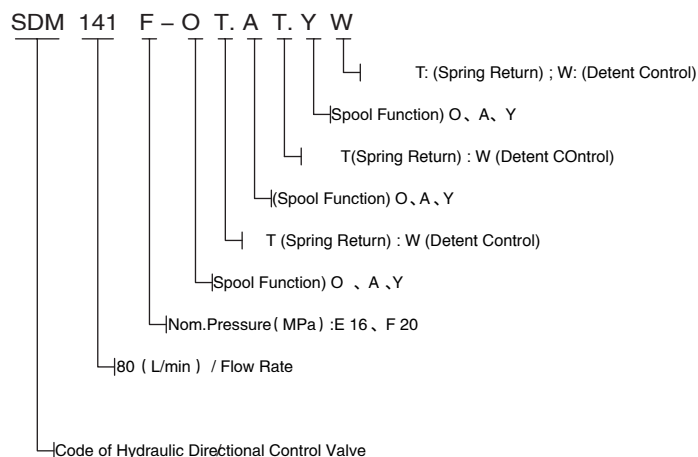
SDM141 Distributor specially designed for loader mini excavators. The drawers are customized for each manufacturer so that they respond to lifting and tilting maneuvers of the excavator avoiding the phenomenon of vibration, usually present on this type of machine.



FEATURES

- ◆ Simple, compact and heavy duty designed 3 sections monoblock valves for open centre hydraulic systems.
- ◆ Fitted with a main pressure relief valve.
- ◆ Each spool has independent load check valve.
- ◆ Series circuit.
- ◆ Optional carry--over port.
- ◆ A wide variety of service port valves.
- ◆ Available manual, electro--hydraulic and remote with flexible cables spool control kits.
- ◆ Diameter 18 mm -- 0.71 in interchangeable spools.

MODEL CODE



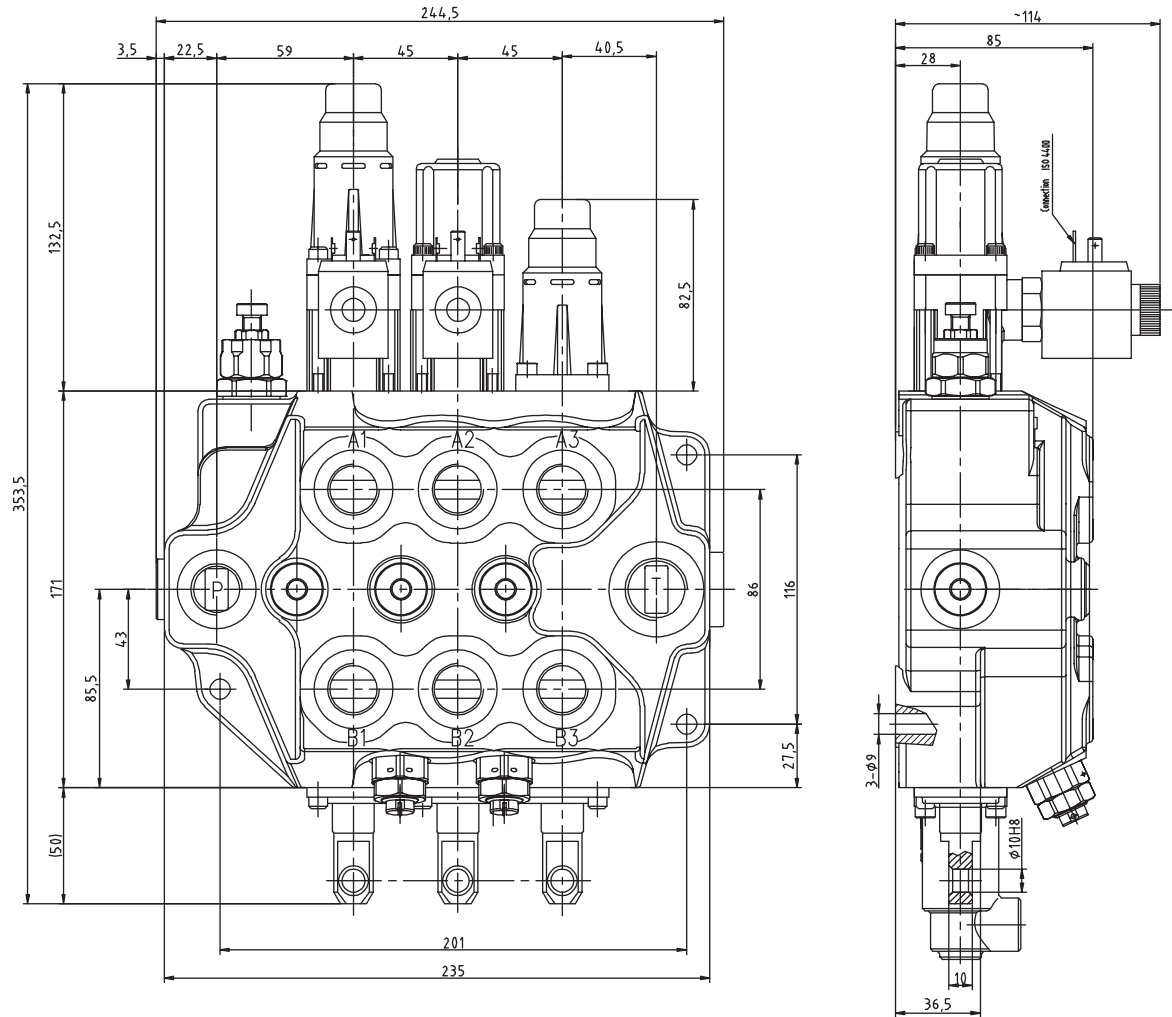
PARAMETERS

(MPa) Nom. Pressure	(MPa) Max. Pressure	(L/min) Nom. Flow rate	(L/min) Max. Flow rate	(MPa) Back Pressure	Hydraulic Oil		
					(°C) Tem.rang	(mm2/S) Visc.rang	(μm) filtrating accuracy
20	25	80	90	≤1	-20 ~ +80	10 ~ 400	≤10

SDM141

SDM141 Series Monoblock Directional Control Valve

SDM141 MODEL DIMENSIONAL DATA



SD25

SD25 Series Sectional Directional Control Valves

SPECIFICATION

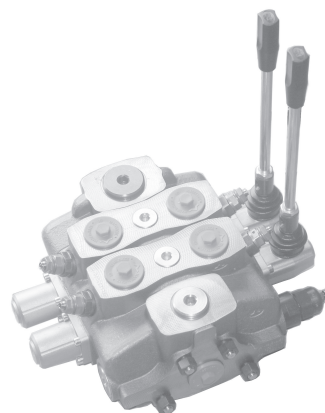
SD25

Port Size P, A & B 1" BSPP

Port Size T & C 1 1/4" BSPP

Nominal Flow Rate 240 l/min

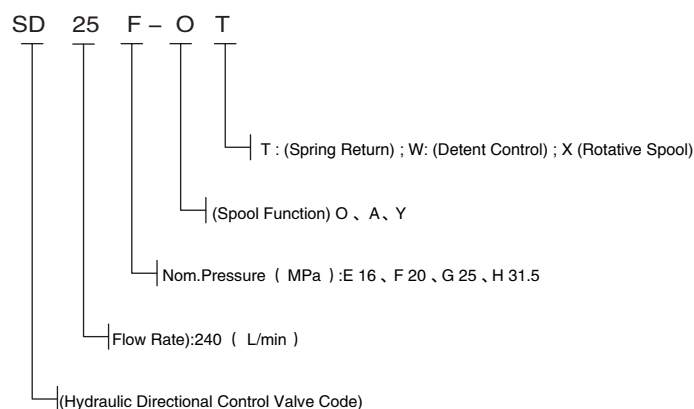
Main Relief Factory Set to 120 BAR (1740 psi)



FEATURES

- ◆ Simple, compact and heavy duty designed sectional valve from 1 to 12 sections for open and closed centre hydraulic systems.
- ◆ Fitted with a main pressure relief valve and a load check valve on every working section
- ◆ Available with parallel or series circuit.
- ◆ Optional carry--over port.
- ◆ A wide variety of service ports and circuit valves.
- ◆ Available manual, pneumatic, hydraulic, electro--hydraulic, and remote with flexible cables spool control kits.
- ◆ Diameter 25 mm (0.98 in) interchangeable spools.

MODEL CODE



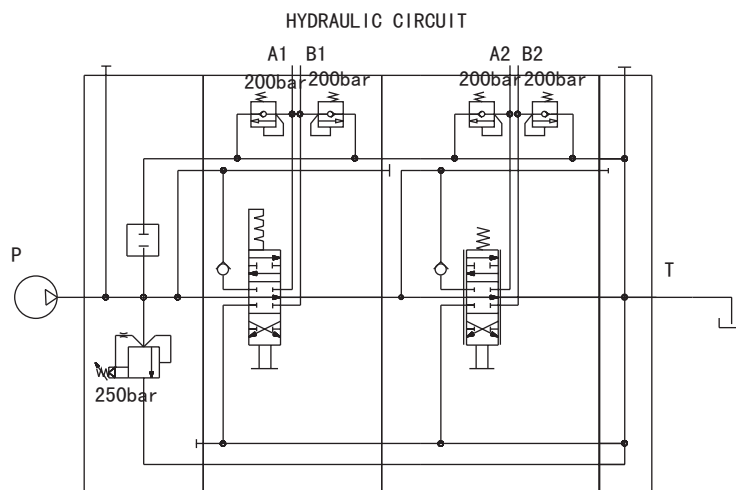
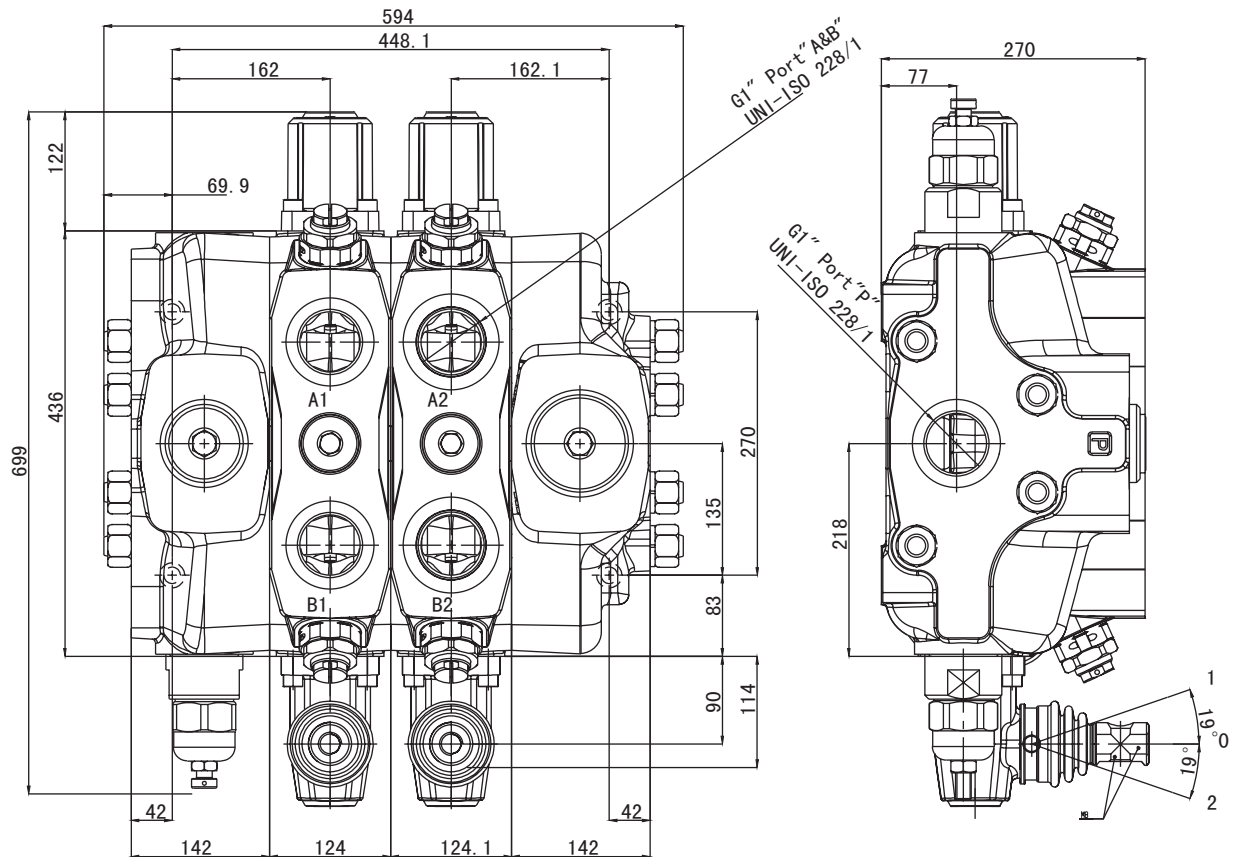
PARAMETERS

(MPa) Nom. Pressure	(MPa) Max. Pressure	(L/min) Nom. Flow rate	(MPa) Back Pressure	Hydraulic Oil		
				(°C) Tem.rang	(mm2/S) Visc.rang	(μ.m) filtrating accuracy
16	31.5	240	≤1	-20 ~ +80	10 ~ 400	≤10

SD25

SD25 Series Sectional Directional Control Valves

SD25 MODEL DIMENSIONAL DATA



SDS400

SDS400 Series Sectional Directional Control Valves

SDS400 MODEL DIMENSIONAL DATA

