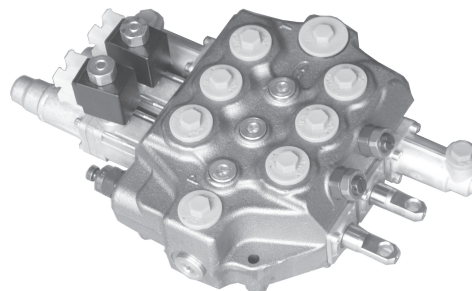


SDM141

SDM141 Series Monoblock Directional Control Valve

SPECIFICATION

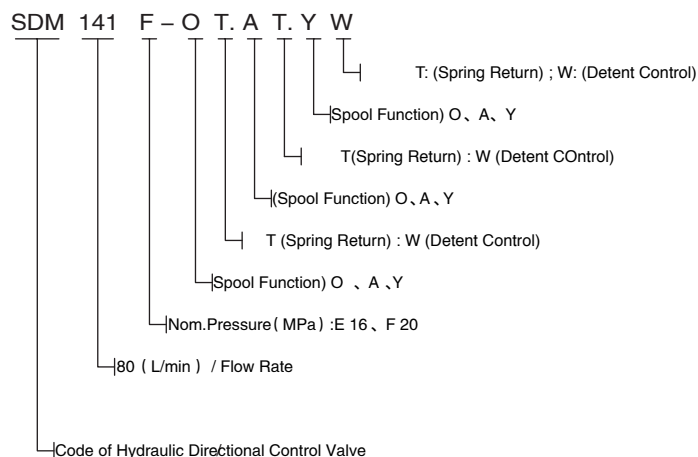
SDM141 Distributor specially designed for loader mini excavators. The drawers are customized for each manufacturer so that they respond to lifting and tilting maneuvers of the excavator avoiding the phenomenon of vibration, usually present on this type of machine.



FEATURES

- ◆ Simple, compact and heavy duty designed 3 sections monoblock valves for open centre hydraulic systems.
- ◆ Fitted with a main pressure relief valve.
- ◆ Each spool has independent load check valve.
- ◆ Series circuit.
- ◆ Optional carry--over port.
- ◆ A wide variety of service port valves.
- ◆ Available manual, electro--hydraulic and remote with flexible cables spool control kits.
- ◆ Diameter 18 mm -- 0.71 in interchangeable spools.

MODEL CODE



PARAMETERS

(MPa) Nom. Pressure	(MPa) Max. Pressure	(L/min) Nom. Flow rate	(L/min) Max. Flow rate	(MPa) Back Pressure	Hydraulic Oil		
					(°C) Tem.rang	(mm2/S) Visc.rang	(μm) filtrating accuracy
20	25	80	90	≤1	-20 ~ +80	10 ~ 400	≤10

SDM141

SDM141 Series Monoblock Directional Control Valve

SDM141 MODEL DIMENSIONAL DATA

