

SD14

SD14 Series Monoblock Directional Control Valve

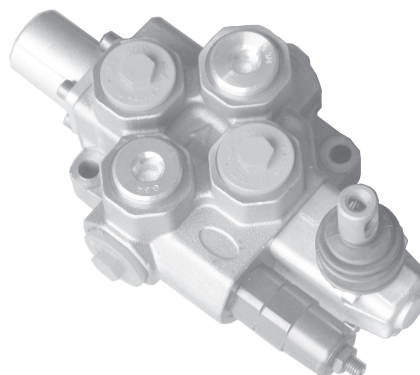
SPECIFICATION

SD Simple, compact design, this valve is only one section for open center and closed center hydraulic systems.

Flow 120 L/min with Return Spring, Rotative Spool or Detent control

All Ports 3/4" BSPP

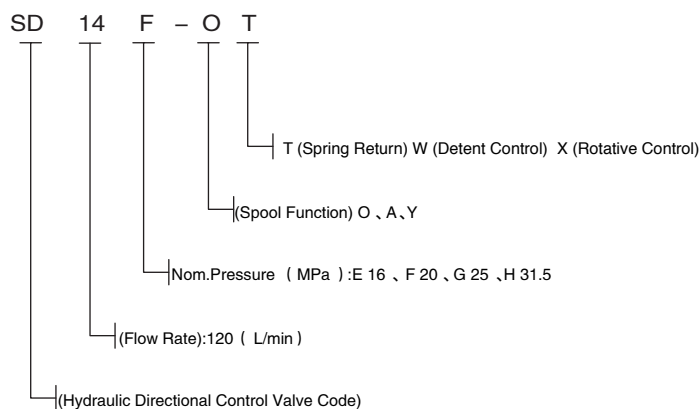
Maximum Back Pressure On Tank Port T - 25 BAR



FEATURES

- ◆ Simple, compact designed, this valves is only one section for open center and closed center hydraulic systems.
- ◆ Fitted with a main pressure relief valve.
- ◆ Diameter 20 mm -- 0.79 in interchangeable spools.
- ◆ Available manual, pneumatic, electro--hydraulic and remote with flexible cable spool control kits.

MODEL CODE



PARAMETERS

(MPa) Nom. Pressure	(MPa) Max. Pressure	(L/min) Nom. Flow rate	(L/min) Max. Flow rate	(MPa) Back Pressure	Hydraulic Oil		
					(°C) Tem.rang	(mm2/S) Visc.rang	(μm) filtrating accuracy
20	25	120	120	≤ 1	-20 ~ +80	10 ~ 400	≤ 10

SD14

SD14 Series Monoblock Directional Control Valve

SD14 MODEL DIMENSIONAL DATA

