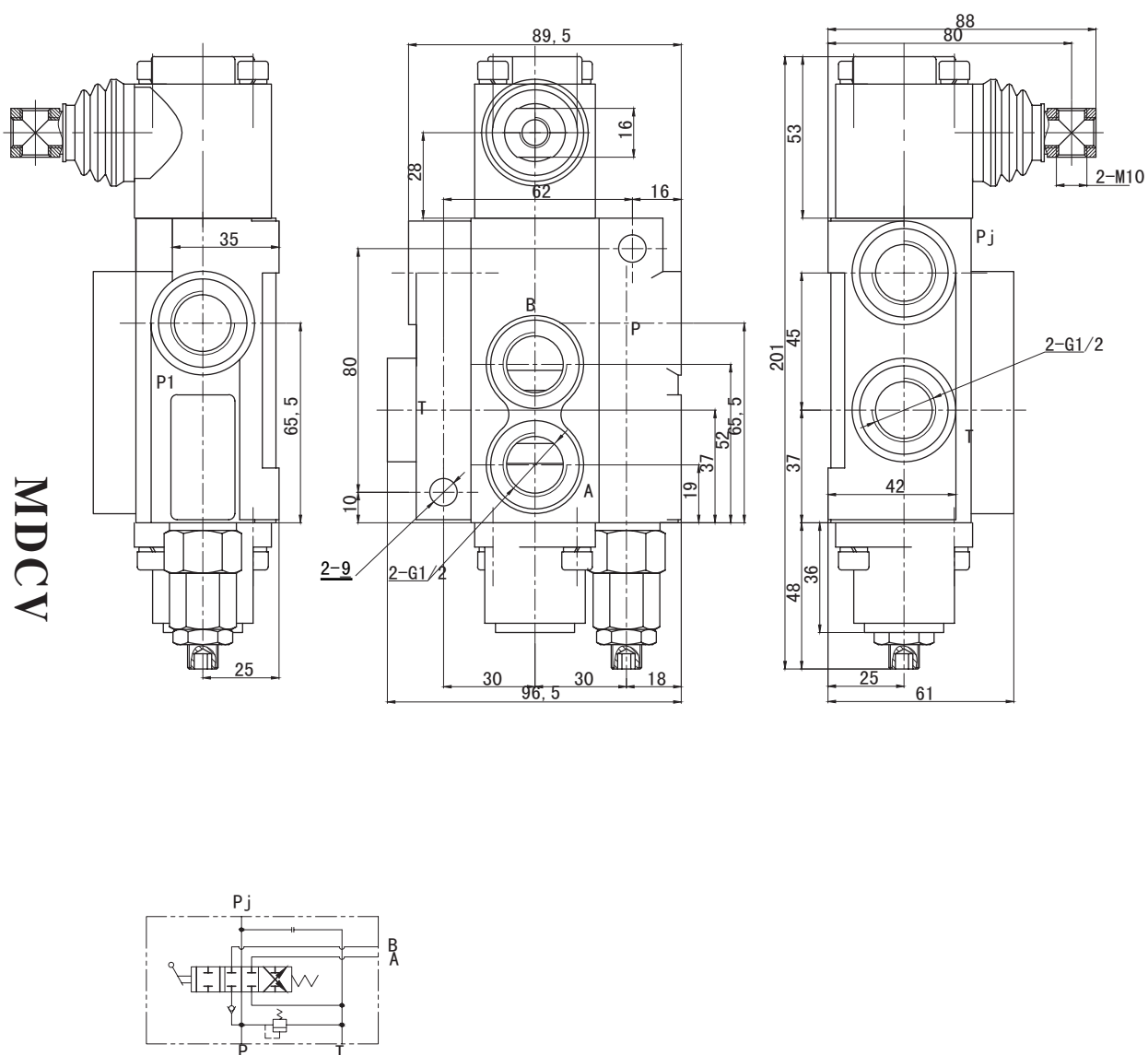


P40

P40 Series Monoblock Directional Control Valves

P40 MODEL DIMENSIONAL DATA



P80

P80 Series Monoblock Directional Control Valves

APPLICATIONS&FEATURES

P80 series valves with middle-high pressure monoblock construction is developed based on Europe technology.

◆ Inner check valve: The check valve inside the valve body is to insure the hydraulic oil not to be returned.

◆ Inner relief valve: The relief valve inside the valve body is able to adjust the hydraulic system working pressure.

◆ Oil way: Parallel circuit, power beyond option

◆ Control Way: Manual control, pneumatic control, hydraulic and electric control for optional.

◆ Valve construction: monoblock construction, 1-6 levers.

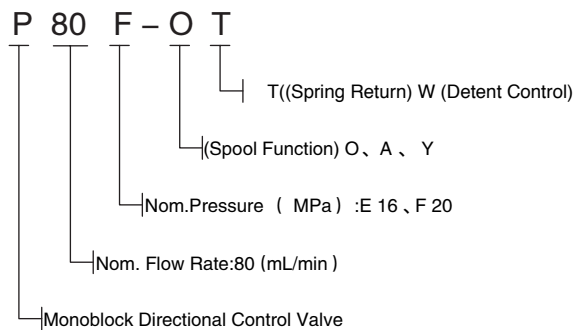
◆ Spool Function: O,Y, P,A.

◆ Option:Hydraulic lock is available to be added on A and B port.

◆ Available manual, pneumatic control, electric and pneumatic control, hydraulic and electric control and etc.



MODEL CODE



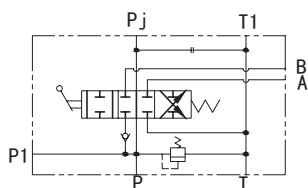
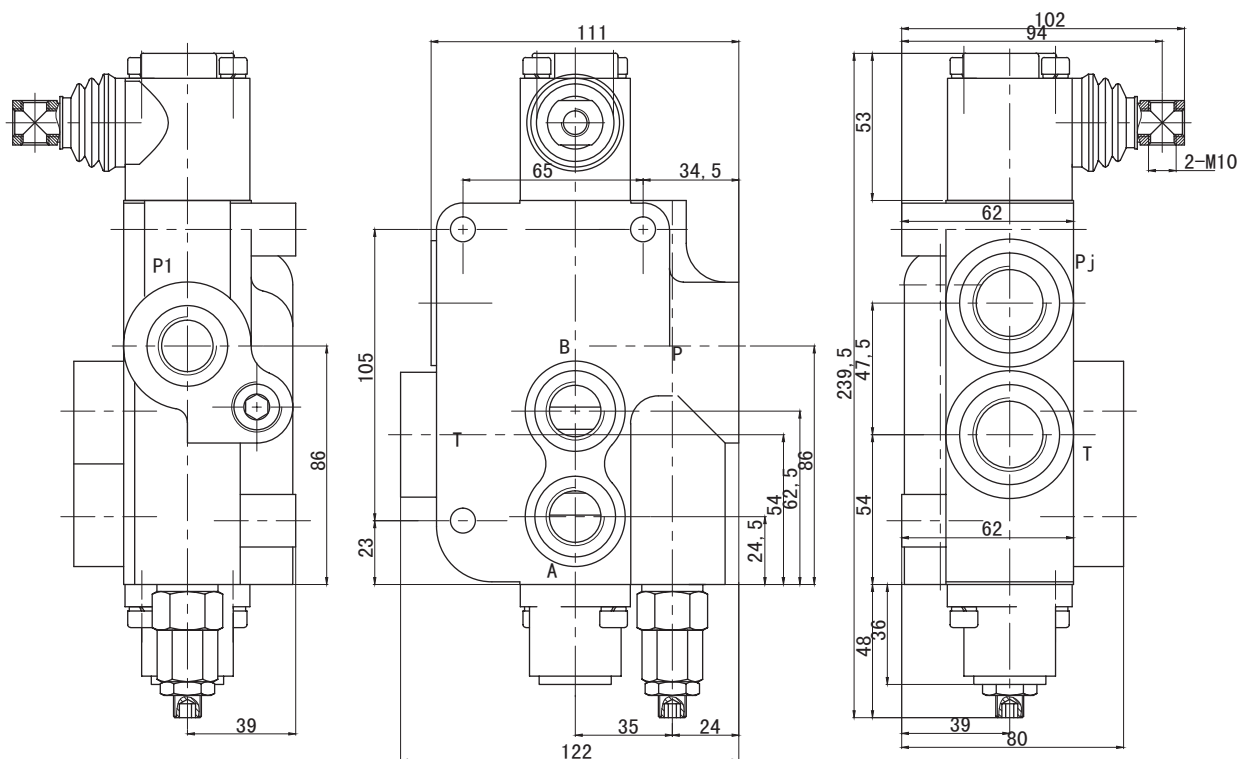
PARAMETERS

(MPa) Nom. Pressure	(MPa) Max. Pressure	(L/ min) Nom. Flow rate	(L/min) Max. Flow rate	(MPa) Back Pressure	Hydraulic Oil		
					(℃) Tem.rang	(mm2/S) Visc.rang	(μ m) filtrating accuracy
20	31.5	80	80	≤1	-20 ~ +80	10 ~ 400	≤10

P80

P80 Series Monoblock Directional Control Valves

P80 MODEL DIMENSIONAL DATA



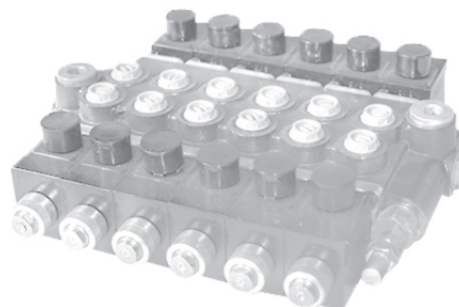
Z50

Z50 Series Solenoid Operated Monoblock Directional Control Valves

APPLICATIONS&FEATURES

Z50 series valves with middle-high pressure monoblock construction is developed based on Europe technology.

The monoblock directional control valves-solenoid operated, offer perfect choice whether you are designing a new system or just simply trying to get more out of your current system. With two special spools and 7 different monoblock housings these valves can meet the specific needs of your application and hydraulic schemes by their double acting in 3 positions A and D spools.



◆ Inner check valve: The check valve inside the valve body is to insure the hydraulic oil not to be returned.

◆ Inner relief valve: The relief valve inside the valve body is able to adjust the hydraulic system working pressure.

◆ Oil way: Parallel circuit, power beyond option

◆ Coils, Connector ISO4400: 12VDC, 24VDC

◆ Threads:P,T-G1/2, SAE10, A,B-G3/8,SAE8

◆ Valve construction: Monoblock construction, 1-7 levers.

◆ Precise bore honing and spool grinding results in less cross-port leakage and less wasted energy. These precise valves also allow for interchangeable spools for easy on place maintainance.

PARAMETERS

(MPa) Nom. Pressure	(MPa) Max. Pressure	(L/min) Nom. Flow rate	(L/min) Max. Flow rate	(MPa) Back Pressure	Hydraulic Oil		
					(°C) Tem.rang	(mm2/S) Visc.rang	(μ m) filtrating accuracy
20	31.5	40	50	≤1	-20 ~ +80	10 ~ 400	≤10

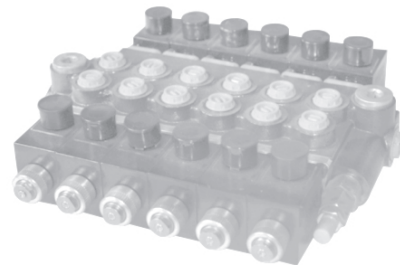
Z80

Z80 Series Solenoid Operated Monoblock Directional Control Valves

APPLICATIONS&FEATURES

Z80 series valves with middle-high pressure monoblock construction is developed based on Europe technology.

◆ The monoblock directional control valves-solenoid operated, offer perfect choice whether you are designing a new system or just simply trying to get more out of your current system. With two special spools and 6 different monoblock housings these valves can meet the specific needs of your application and hydraulic schemes by their double acting in 3 positions A and D spools.



◆ Inner check valve: The check valve inside the valve body is to insure the hydraulic oil not to be returned.

◆ Inner relief valve: The relief valve inside the valve body is able to adjust the hydraulic system working pressure.

◆ Oil way: Parallel circuit, power beyond option

◆ Coils, Connector ISO4400: 12VDC, 24VDC

◆ Threads:P,A,B-G1/2, SAE10, T-G3/4,SAE12

◆ Valve construction: Monoblock construction, 1-6 levers.

Precise bore honing and spool grinding results in less cross-port leakage and less wasted energy. These precise valves also allow for interchangeable spools for easy on place maintainance.

PARAMETERS

(MPa) Nom. Pressure	(MPa) Max. Pressure	(L/min) Nom. Flow rate	(L/min) Max. Flow rate	(MPa) Back Pressure	Hydraulic Oil		
					(°C) Tem.rang	(mm2/S) Visc.rang	(μ m) filtrating accuracy
20	31	80	80	≤1	-20 ~ +80	10 ~ 400	≤10

SD14

SD14 Series Monoblock Directional Control Valve

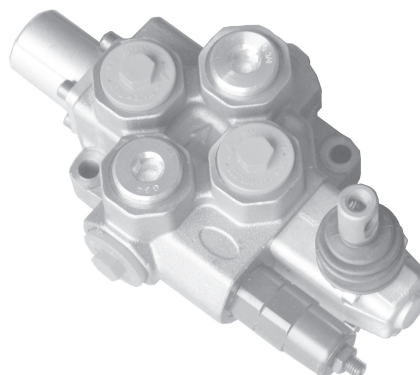
SPECIFICATION

SD Simple, compact design, this valve is only one section for open center and closed center hydraulic systems.

Flow 120 L/min with Return Spring, Rotative Spool or Detent control

All Ports 3/4" BSPP

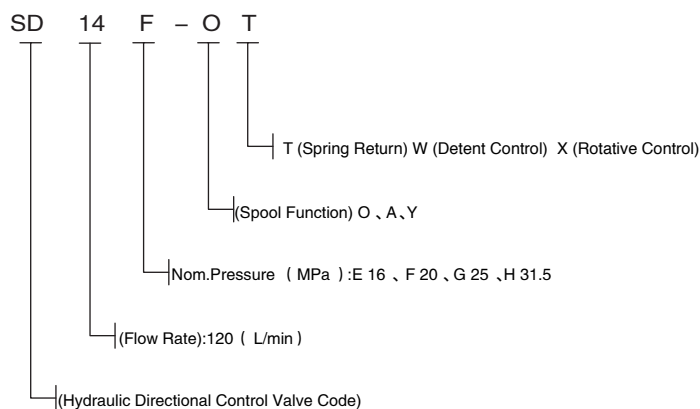
Maximum Back Pressure On Tank Port T - 25 BAR



FEATURES

- ◆ Simple, compact designed, this valves is only one section for open center and closed center hydraulic systems.
- ◆ Fitted with a main pressure relief valve.
- ◆ Diameter 20 mm -- 0.79 in interchangeable spools.
- ◆ Available manual, pneumatic, electro--hydraulic and remote with flexible cable spool control kits.

MODEL CODE



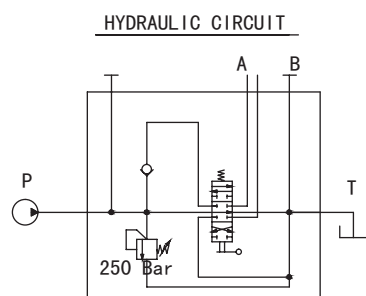
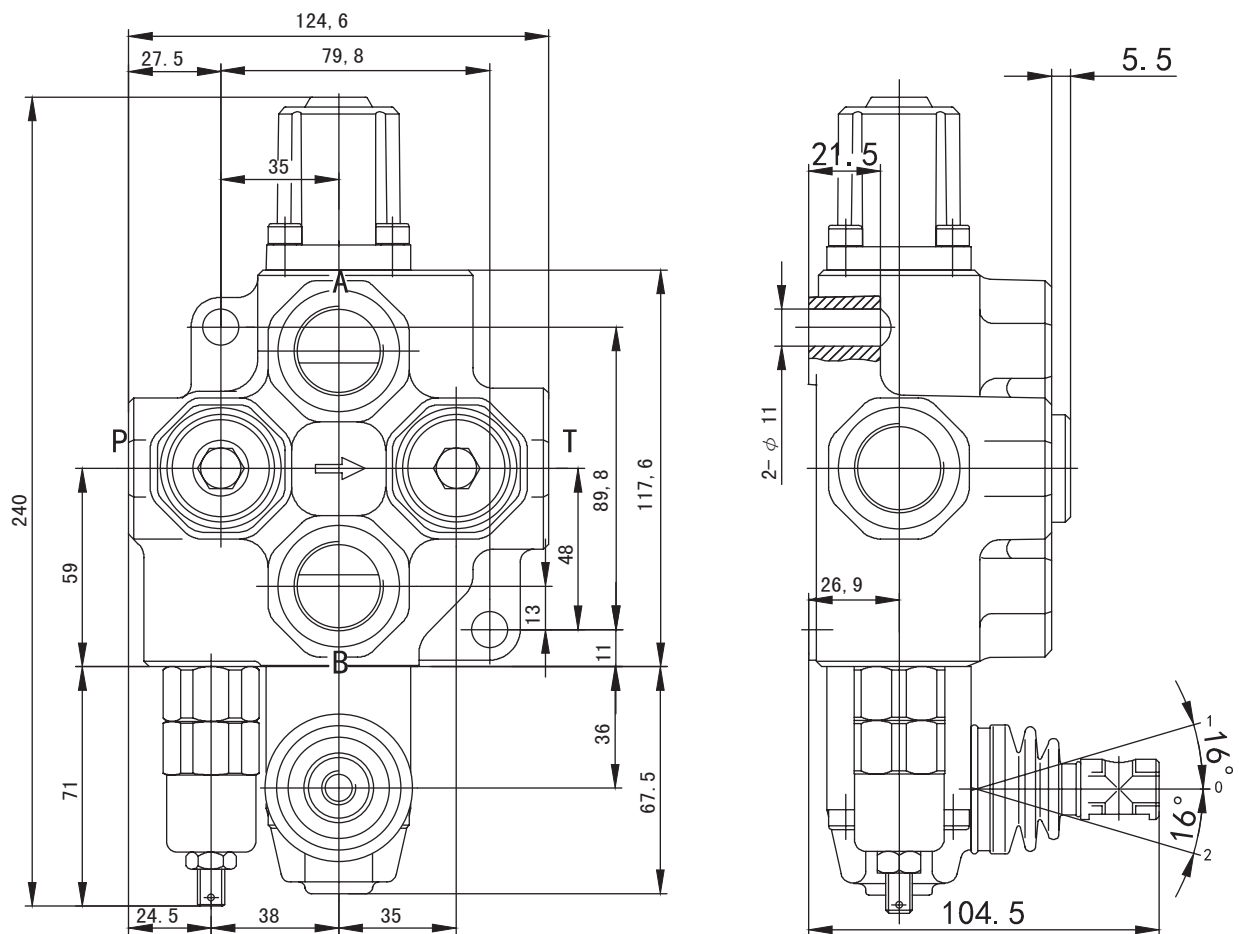
PARAMETERS

(MPa) Nom. Pressure	(MPa) Max. Pressure	(L/min) Nom. Flow rate	(L/min) Max. Flow rate	(MPa) Back Pressure	Hydraulic Oil		
					(°C) Tem.rang	(mm2/S) Visc.rang	(μm) filtrating accuracy
20	25	120	120	≤1	-20 ~ +80	10 ~ 400	≤10

SD14

SD14 Series Monoblock Directional Control Valve

SD14 MODEL DIMENSIONAL DATA

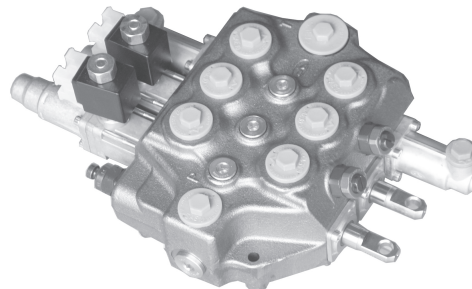


SDM141

SDM141 Series Monoblock Directional Control Valve

SPECIFICATION

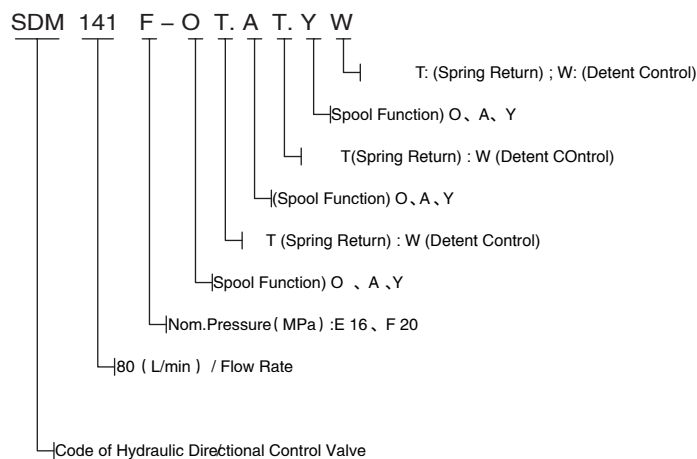
SDM141系列整体阀引进了欧洲先进技术，采用了串联油路，每一片都配有一个单向阀，同时设计了压力输出口与其他液压元件相连接提供动力源。经过特殊设计的密封方式，使阀的密封性能卓越，可以代替进口阀，专门用于滑移式装载机。



FEATURES

- ◆ Simple, compact and heavy duty designed 3 sections monoblock valves for open centre hydraulic systems.
- ◆ Fitted with a main pressure relief valve.
- ◆ Each spool has independent load check valve.
- ◆ Series circuit.
- ◆ Optional carry--over port.
- ◆ A wide variety of service port valves.
- ◆ Available manual, electro--hydraulic and remote with flexible cables spool control kits.
- ◆ Diameter 18 mm -- 0.71 in interchangeable spools.

MODEL CODE



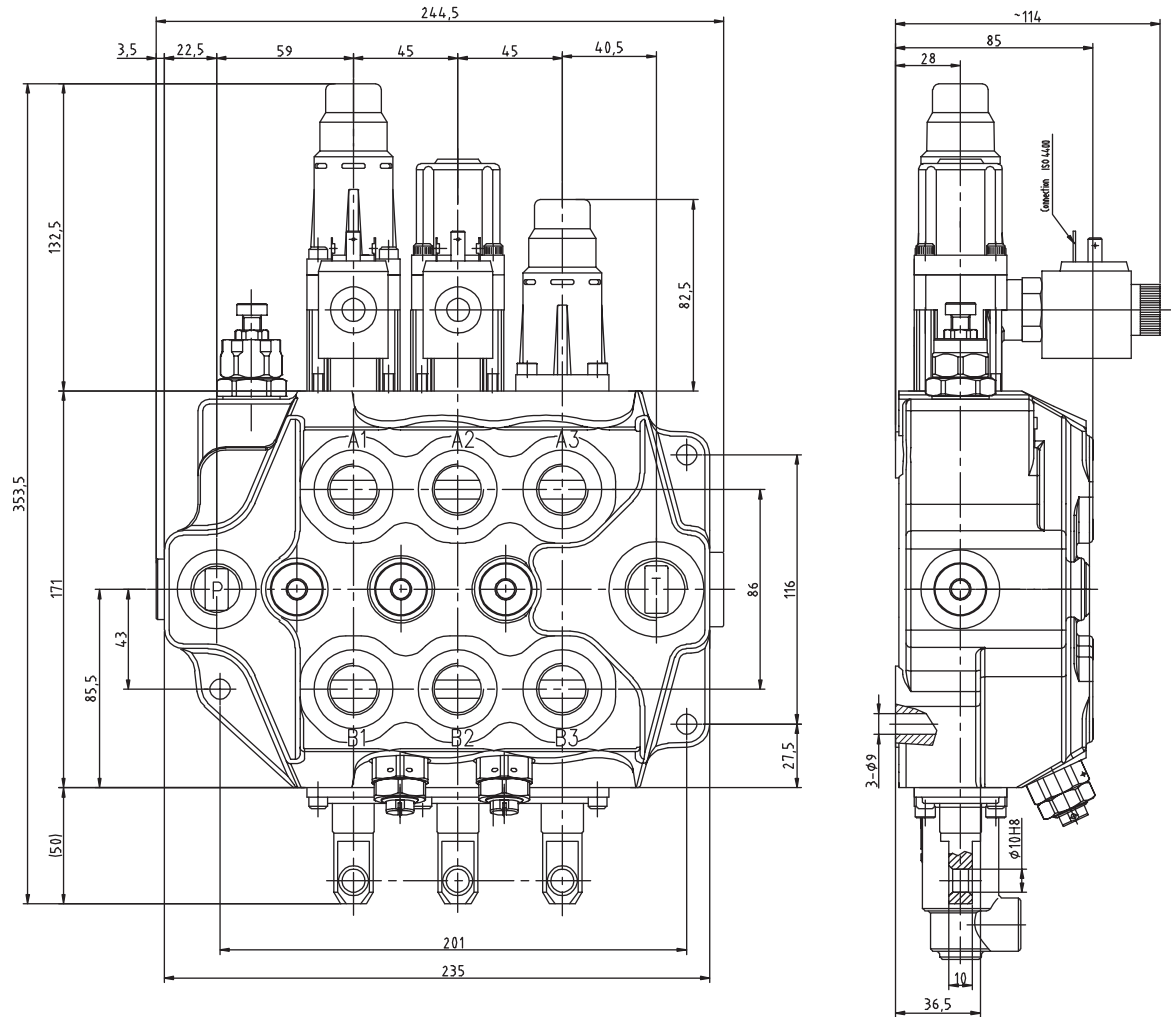
PARAMETERS

(MPa) Nom. Pressure	(MPa) Max. Pressure	(L/min) Nom. Flow rate	(L/min) Max. Flow rate	(MPa) Back Pressure	Hydraulic Oil		
					(°C) Tem.rang	(mm2/S) Visc.rang	(μm) filtrating accuracy
20	25	80	90	≤1	-20 ~ +80	10 ~ 400	≤10

SDM141

SDM141 Series Monoblock Directional Control Valve

SDM141 MODEL DIMENSIONAL DATA

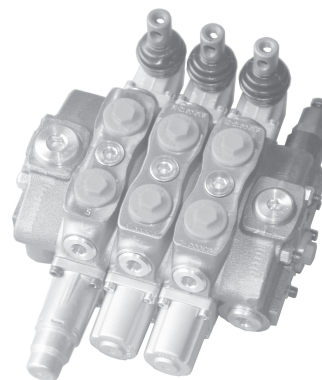


SD8

SD8 Series Sectional Directional Control Valves

SPECIFICATION

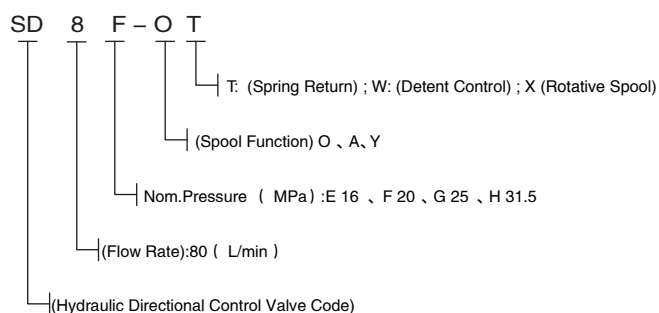
SD8
Port Size P, A & B 1/2" BSPP
Port Size T & C 3/4" BSPP
Nominal Flow Rate 90 l/min
Main Relief Factory Set to 120 BAR (1740 psi)



FEATURES

- ◆ Simple, compact and heavy duty designed sectional valve from 1-14 sections for open and closed centre hydraulic systems.
- ◆ Flow rate: 90l/min, with max pressure 315bar.
- ◆ Joining port: L (screw connection)
- ◆ Spool function options: O,P, Y, A and etc.
- ◆ Nominal diameter: G1/2; G3/4, 7/8-14UNF ,SAE10, 3/4-16UNF, SAE8, M18X1.5
- ◆ Spring side control options: spring control and detent control
- ◆ Lever side control options: manual, pneumatic control, electric and pneumatic control, hydraulic and electric control, hydraulic control and remote control.

MODEL CODE



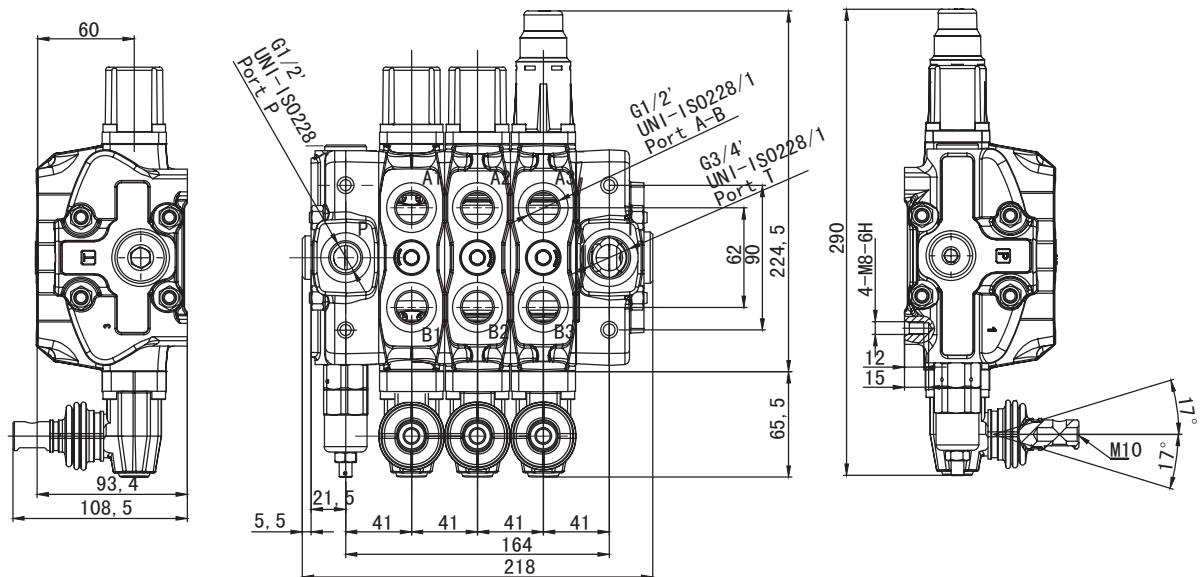
PARAMETERS

(MPa) Nom. Pressure	(MPa) Max. Pressure	(L/min) Nom. Flow rate	(MPa) Back Pressure	Hydraulic Oil		
				(°C) Tem.rang	(mm2/S) Visc.rang	(μ.m) filtrating accuracy
16	31.5	80	≤1	-20 ~ +80	10 ~ 400	≤10

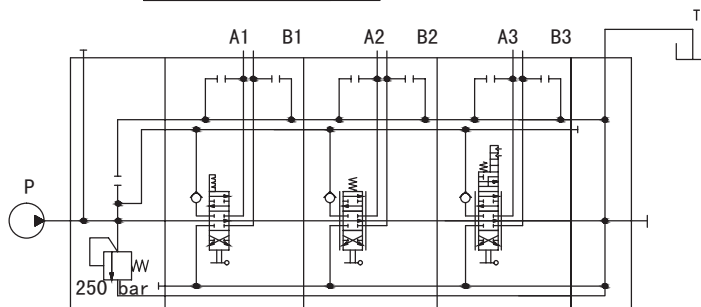
SD8

SD8 Series Sectional Directional Control Valves

SD8 MODEL DIMENSIONAL DATA



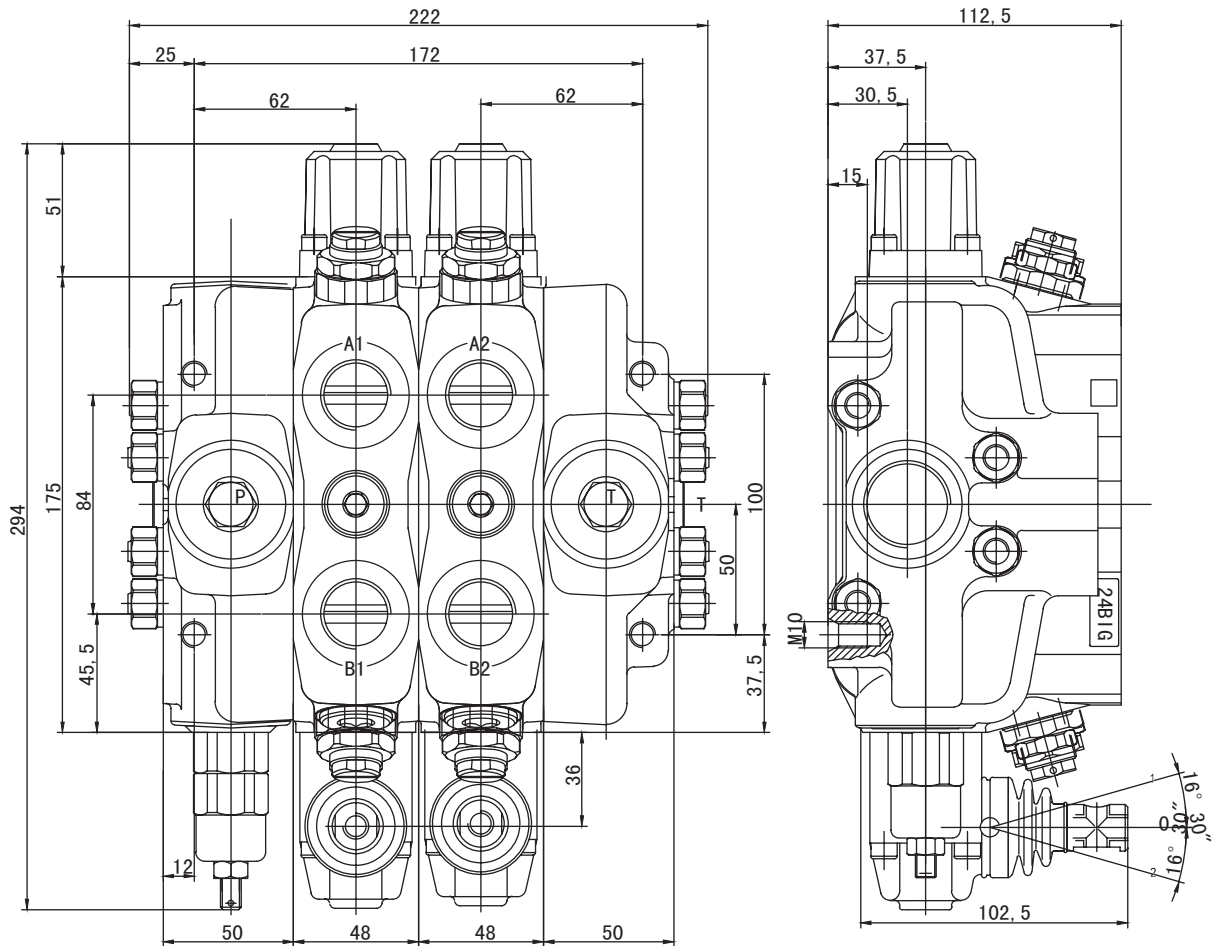
HYDRAULIC CIRCUIT



SDS180

SDS180 Series Sectional Directional Control Valves

SDS180 MODEL DIMENSIONAL DATA



SD25

SD25 Series Sectional Directional Control Valves

SPECIFICATION

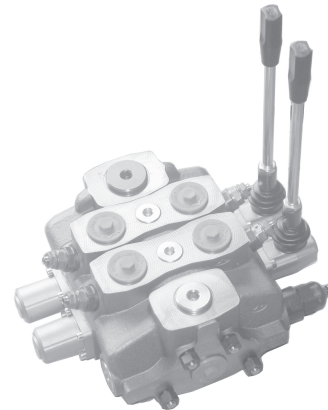
SD25

Port Size P, A & B 1" BSPP

Port Size T & C 1 1/4" BSPP

Nominal Flow Rate 240 l/min

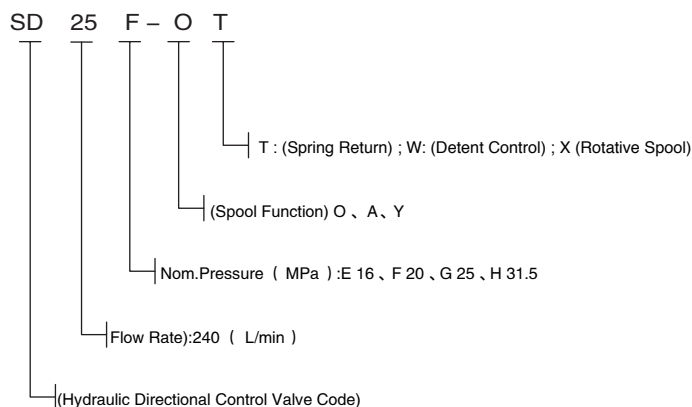
Main Relief Factory Set to 120 BAR (1740 psi)



FEATURES

- ◆ Simple, compact and heavy duty designed sectional valve from 1 to 12 sections for open and closed centre hydraulic systems.
- ◆ Fitted with a main pressure relief valve and a load check valve on every working section
- ◆ Available with parallel or series circuit.
- ◆ Optional carry--over port.
- ◆ A wide variety of service ports and circuit valves.
- ◆ Available manual, pneumatic, hydraulic, electro--hydraulic, and remote with flexible cables spool control kits.
- ◆ Diameter 25 mm (0.98 in) interchangeable spools.

MODEL CODE



PARAMETERS

(MPa) Nom. Pressure	(MPa) Max. Pressure	(L/min) Nom. Flow rate	(MPa) Back Pressure	Hydraulic Oil		
				(°C) Tem.rang	(mm2/S) Visc.rang	(μ.m) filtrating accuracy
16	31.5	240	≤1	-20 ~ +80	10 ~ 400	≤10

SD25

SD25 Series Sectional Directional Control Valves

SD25 MODEL DIMENSIONAL DATA

