

## HYDRAULIC DIRECTIONAL CONTROL VALVES



### Description

For starting, controlling and stopping the working fluid between the generator of pressured flow, the consumers at the Tank.

### Specifications

1.Valve monoblock	
2.Mounting	3 bolts M8
3.Pressure connections	internal thread
4.Ambient temperature	-40C...+60C
5.Pressure medium	mineral oil based hydraulic oil
6.Viscosity	12...800 mm <sup>2</sup> /s permissible range 20...100 mm <sup>2</sup> /s recommended range
7.Fluid temperature	- 15C...+80C
8.Filtration	Oil contamination 10 to NAS1638
9. Max. operating pressure max. bar	P = 250 bar T = 50 bar A, B = 300 bar
10.Leakage ( $\boxtimes$ , $\boxtimes$ - $\boxtimes$ )	18 cm <sup>3</sup> /min at 120 bar
11.Nominal flow	80 l/min (see "operating" diagram)
12.Spools stroke	$\pm$ 7 mm
13.Actuating force	< 220 N in spool axis direction

directional control valve P80

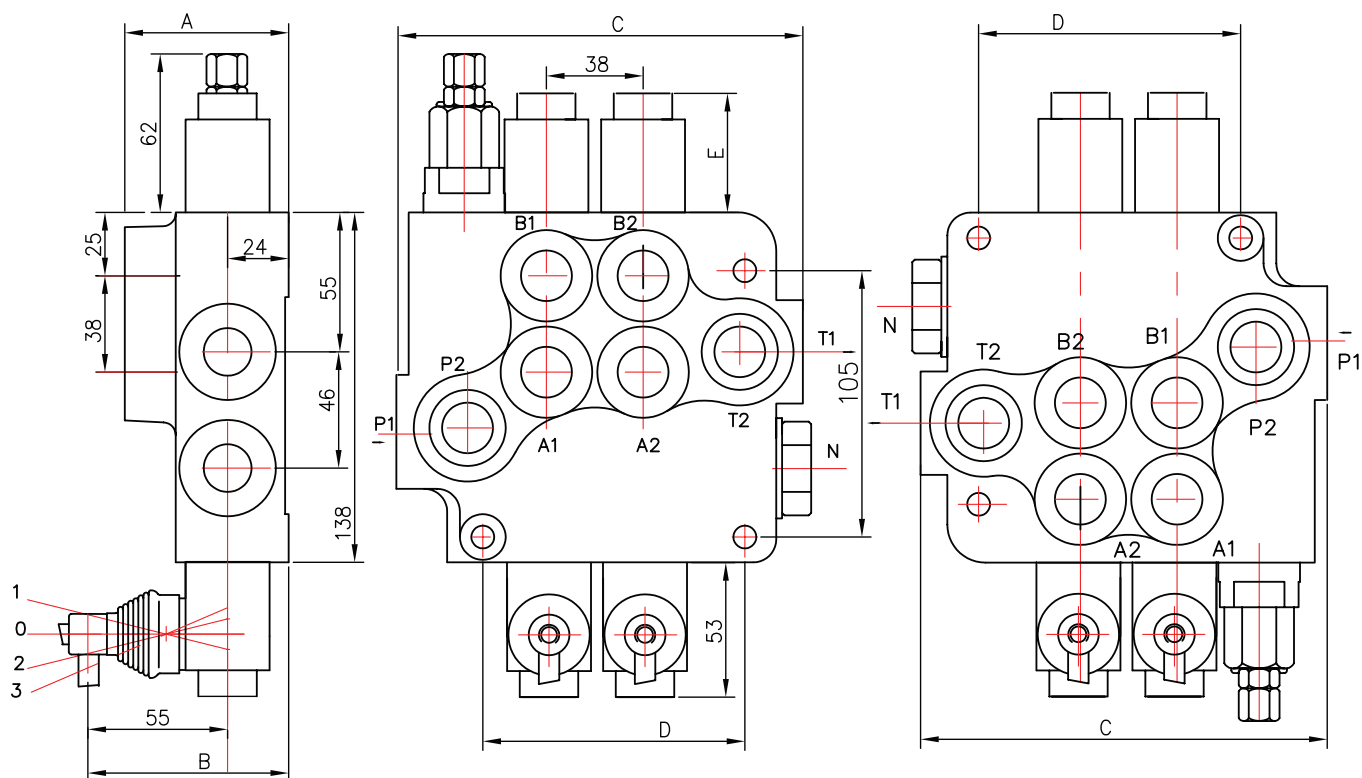


Table 1

	A	B	C	D	P1	P2	T1	T2
P80	65	79	107	65	*	*	—	—
2P80	80	94	160	103	*	*	*	*
3P80	80	94	198	141	*	*	*	*
4P80	80	94	242	179	*	*	*	*
5P80	80	94	280	217	*	*	*	*
6P80	80	94	318	255	*	*	*	*

Table 2

Spool control	E
1, 4, 5, 6, 7, 8, 9, 10, 11,	40
2, 3, 12, 14	72
13	44

0 block with common check valve  
 2 number of spools  
 P80 directional control valve type  
 R inlet high pressure – right  
 1 way of distribution/parallel  
 A first spool distribution type  
 1 spool control/detend and ets  
 A second spool distribution type  
 1 spool control/detend and estr  
 G ports /treads  
 KZ1 general operation feature  
 T with "teton"  
 H operation feature /sneumatic  
 E 1/2 electric switch  
 C2 high pressure carry over  
 11 bonnection ports in use

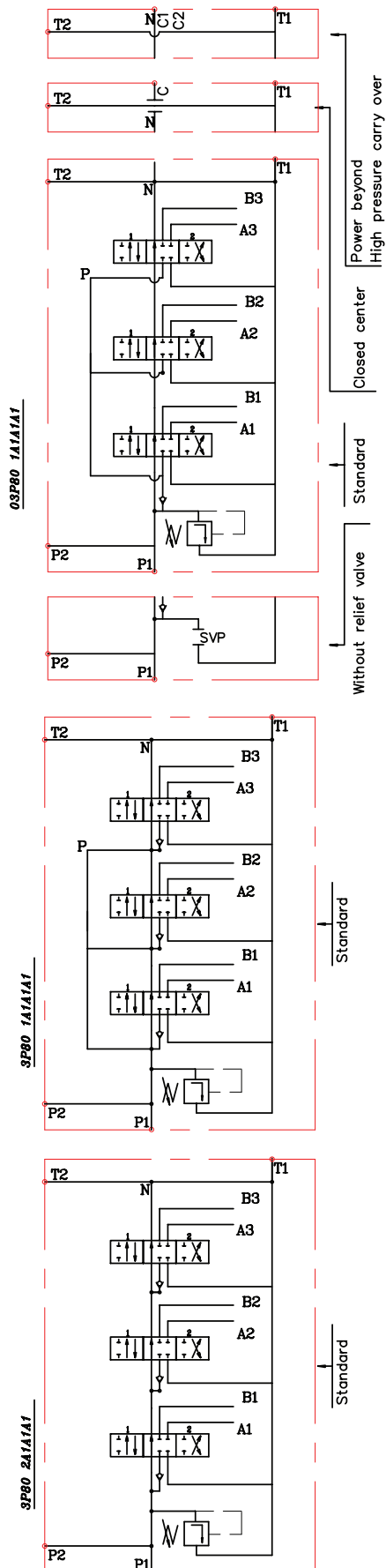


Table 3

code	Number of spools
1	1
2	2
3	3

ets.

Table 4

code	way of distribution
1	parallel
2	tandem(series parallel)

Table 5

code	spool type
A	
B	
C	
D	
E	
F	
G	
H	
M	
N	
O	
P	
Q	
R	
S	
T	
L	

Table 6

code	spool control
1	
2	
3	
4	
5	
6	
7	
8	
9	
10	
11	
12	
13	

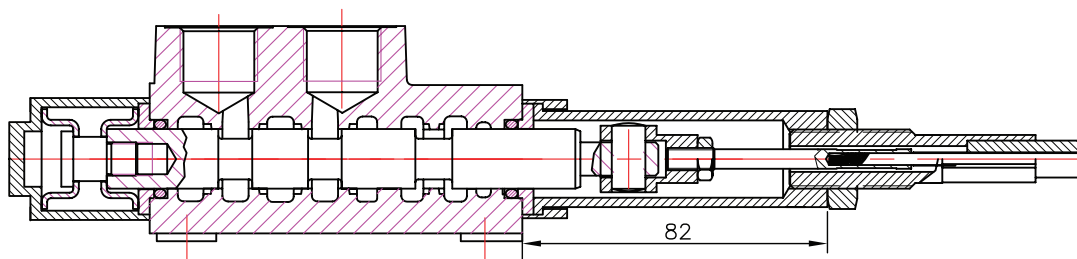
Table 7

code	incorporated microswitch
E	<div> mikroswitch type Omron-V 165 I C5 </div>

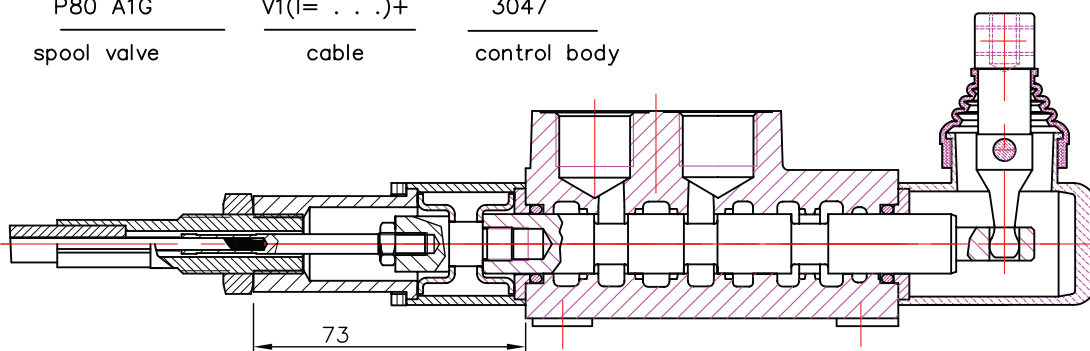
Table 8

code	operation feature
P	<div> on-off pneumatic control; 5-10 bar ; ports G1/4 </div>
H	<div> on-off hydraulic control ; pn = 5 - 20 bar ; ports G1/4 </div>

REMOTE CONTROLS



P80 A1G      V1(I= . . .)+      3047  
spool valve      cable      control body



P80 A1G      V2KZ1(I= . . .)+      3047  
spool valve      cable      control body

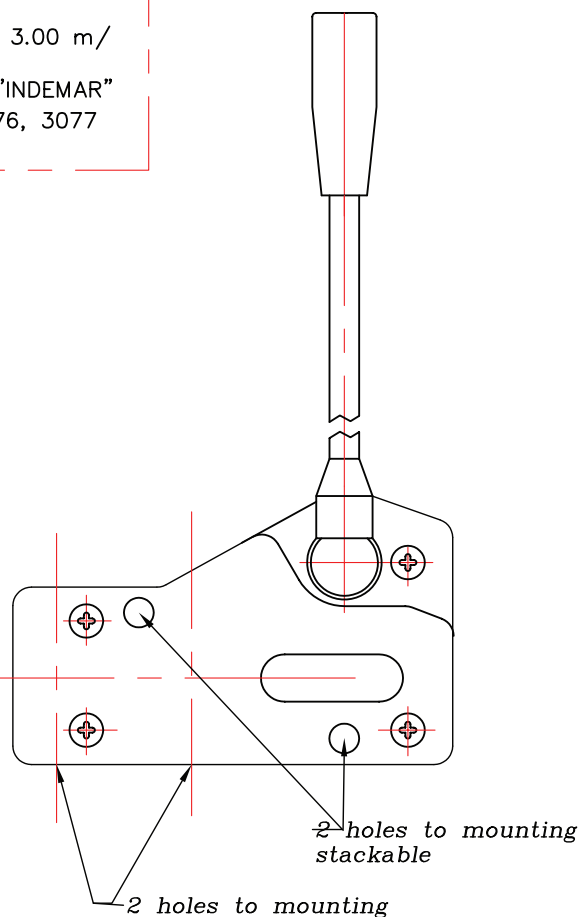
Cable "INDEMAR" Cod. IT 3056 /l=1.00; 1.50; 2.00; 2.50; 3.00 m/

+control body "INDEMAR"  
code 3047, 3076, 3077

Technical specifications

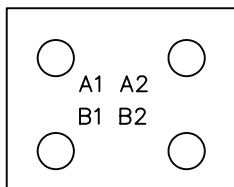
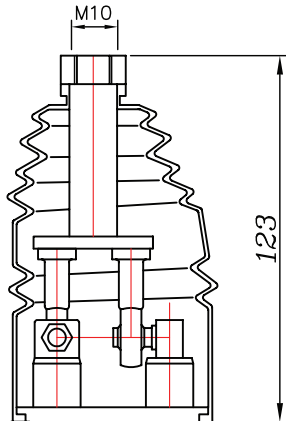
	3047	3076	3077
Stroke	13+13 mm	13+13 mm	13+13 mm
Max. load	45 kg	45 kg	45 kg
Level ratio	10:1	10:1	10:1
Lock in neutral	No	No	Yes
Antireverse lock	No	Yes	No
Body colour	Black	Black	Black
Cables type	Heavy Duty	Heavy Duty	Heavy Duty
Operating temperature	-40/+80C	-40/+80C	-40/+80C

High solidity controls for easy mounting on every type of distributor. They can be mounted stand alone or packed together. They use push-pull heavy duty cables that provide a positive smooth operating lever and are manufactured in three different models to meet different needs of Clients.

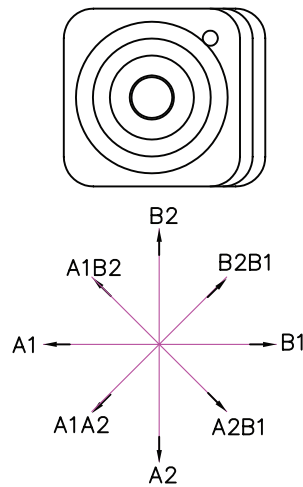


JOYSTICK "+"

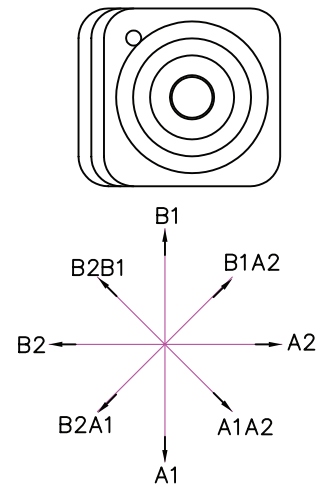
This control gives the possibility to operate, at the same time two spools with a "+" movement.



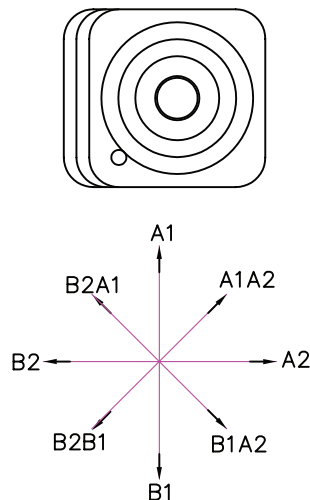
standard version 1



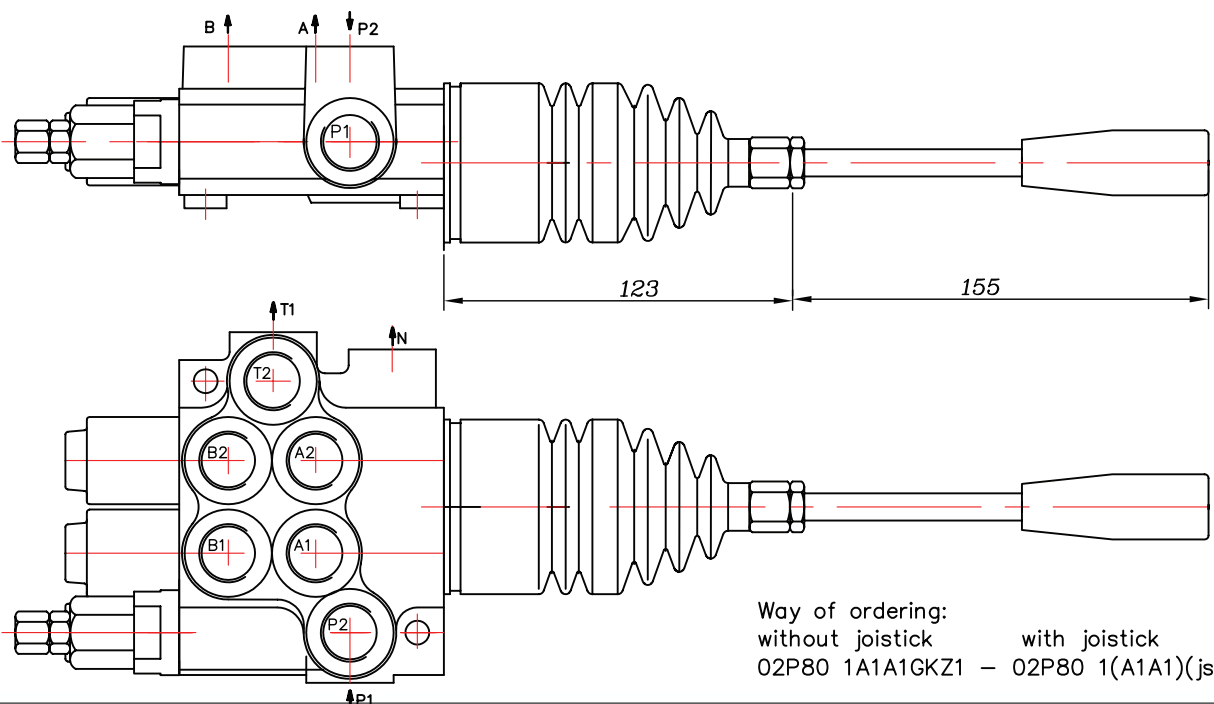
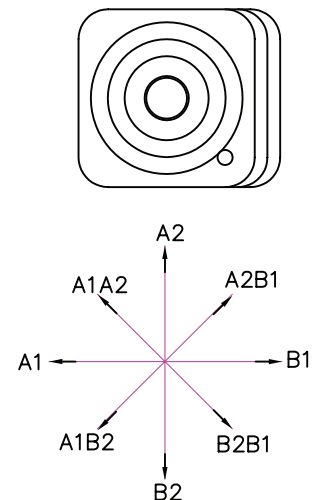
standard version 2



standard version 3



standard version 4



Way of ordering:  
without joystick      with joystick  
02P80 1A1A1GKZ1 - 02P80 1(A1A1)(js+3)G