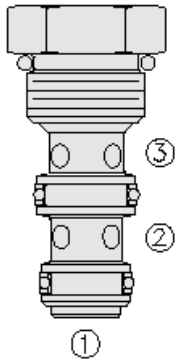




Overview



Description

A load shuttle, screw-in, cartridge style, hydraulic check valve, for use in blocking circuits where a priority of flow/direction is given to a higher pressure circuit over a lower one

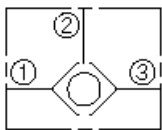
Operation

The LS08-30 will allow flow from the higher pressure port 1 or 3 to port 2

Features

- Rapid response to load direction changes.
- Compact size.

Symbol



Ratings

Pressure Ratings

Pressure rating 241 bar (3500 psi)

Flow Ratings

Flow rating See performance graph
Maximum internal leakage 0.25 ml/min (5 drops/min) - **Note:** At 207 bar (3000 psi)

Temperature Ratings

Operating fluid temperature	-40 to 100 °C (-40 to 212 °F)	- Note: With buna N seals
	-26 to 204 °C (-15 to 400 °F)	- Note: With fluorocarbon seals
	-54 to 107 °C (-65 to 225 °F)	- Note: With polyurethane seals
	-54 to 107 °C (-65 to 225 °F)	- Note: With urethane seals
Storage temperature	-40 to 70 °C (-40 to 160 °F)	
Ambient temperature	-40 to 90 °C (-40 to 194 °F)	

Other Ratings

Corrosion protection 960 hr salt spray per ASTM b117 (gls08-30)

Operating Parameters

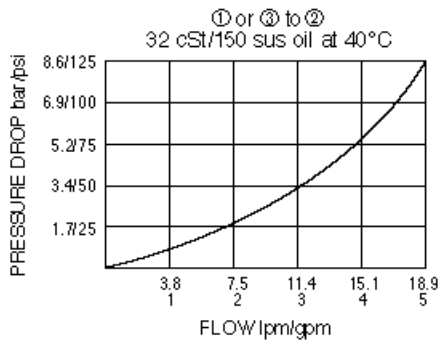
Fluids	Mineral based or synthetic hydraulic fluid with lubricating properties
Fluid viscosity range	7.4 to 420 cSt
Maximum operating contamination level	20/18/14 per ISO 4406

Properties

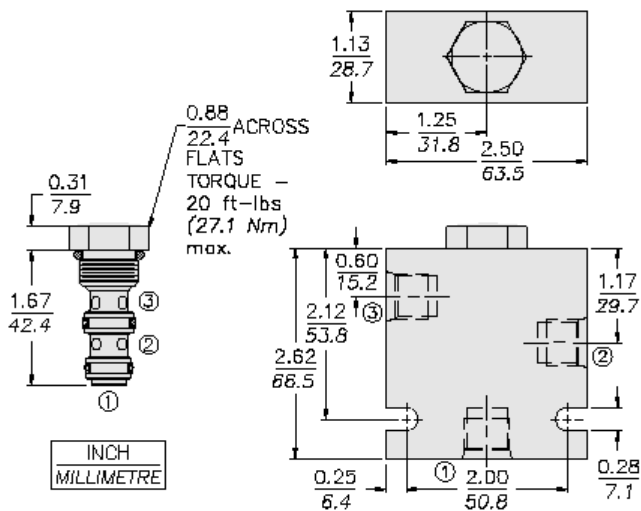
Unit weight	0.06 kg (0.14 lb)
Internal wetted surface area	70 cm ² (10.8 in ²)



Performance



Dimensions



ORIFICE DISC MAY NOT BE
USED WITH THIS PRODUCT.

Materials

Materials

Cartridge: Weight: 0.08 kg (0.17 lb); Steel with Zinc-plated exposed surfaces; Buna N O-rings and back-ups standard.

Standard Ported Body : Weight: 0.27 kg (0.60 lb); Anodized high-strength 6061 T6 aluminum alloy, rated to 207 bar (3000 psi). Ductile iron bodies available; dimensions may differ.

Installation Specifications

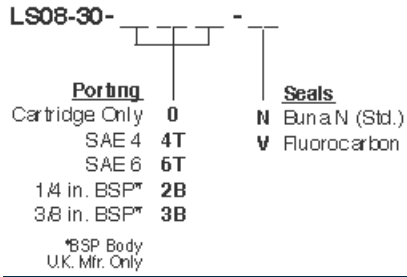
Cavity	VC08-3
Cartridge installation torque	25.8 to 28.5 N-m (19 to 21 ft-lb)
Maximum allowable torque	54.2 N-m (40 ft-lb)
Orientation restriction	None

Accessories

Seal kit	SK08-3N-MM	- Note: Buna N
	SK08-3V-MM	- Note: Fluorocarbon
	SK08-3P-MM	- Note: Polyurethane
	SK08-3U-OO	- Note: Urethane
Housings		



Order Code



POSITION	CODE	DESCRIPTION
		LS08-30-H-J
H		Line Body
H	0	No Body
H	4T	Aluminum SAE 4
H	6T	Aluminum SAE 6
H	6TD	Ductile Iron SAE 6
H	8TD	Ductile Iron SAE 8
H	3B	Aluminum BSPP 3/8" (3)
H	3BD	Ductile Iron BSPP 3/8" (3)
J		Seal
J	N	Buna-N
J	V	Fluorocarbon
J	P	Polyurethane
J	U	PPDI Urethane