



## G2 SERIES INTRINSICALLY SAFE

A full line of **FLOMEC® G2 Series Turbine Meters** are available in a variety of housing materials. Rugged and dependable, the G2 Series offers:

- Stainless Steel for most water and chemical products
- Aluminum for fuels and petroleum-based products
- PVDF for aggressive chemicals

## FEATURES / BENEFITS

- Meter is designed for thin fluids < 100 cP
- Modular design allows for use with Output Modules, Sensors and Remote Display Kits
- 2 Totals (Batch Total = Resettable, Total = Non-Resettable); Rate of Flow, Factory calibrated in gallons or litres. Field calibratable. Includes non-volatile totals.
- High accuracy meter
- Internal parts are simple to replace for easy maintenance
- AAA Alkaline battery life: 2 years

## PRODUCT CONFIGURATION

### 1 PRODUCT IDENTIFIER:

**G2** = Industrial Grade Flowmeters

### 2 TURBINE MATERIAL:

- S** = Stainless Steel
- A** = Aluminum
- P** = PVDF (1/2 in. y 1 in. only)
- X** = Electronics only (For metal meters)
- Z** = Electronics only (For plastic meters)

### 3 TURBINE SIZE:

- 05** = 1/2 in.
- 07** = 3/4 in.
- 10** = 1 in.
- 15** = 1-1/2 in.
- 20** = 2 in.

### 4 FITTING TYPE:

- N** = NPT (Female)
- I** = ISO (Female) BSPT (ISO 7 Designation is RC)
- F** = 150# ANSI Flange (Available on S10, S15 & S20 only)
- T** = Tri-Clamp Fitting (Available on S05, S07, S10, S15 & S20 only)
- X** = No Turbine Body

### 5 ELECTRONIC CHOICE:

- Computer Display, Meter Mounted*
- Q9** = Q9 2-Button Computer
- Q1** = Q9 2-Button Computer, Vertical Mount (90° Adapter)
- Retrofit Computer Kit (Display Only)*
- R9** = Q9 2-Button Computer Retrofit Kit (Replaces Q9 Display)
- No Electronics - Turbine Only*
- XX** = No Electronics - Turbine Only

### 6 CALIBRATION OF COMPUTER / DISPLAY:

- GM** = Gallons Per Minute (Gallons Default)
- LM** = Liters Per Minute (Litres Default)
- GD** = Gallons Per Minute (Gallons Default) with NIST Certificate
- LD** = Liters Per Minute (Litres Default) with NIST Certificate
- XX** = No Calibration

### 7 PACKAGING:

- A** = 05 Thru 10 Turbines, Turbine Only or w/Q9 Electronics  
05 Thru 20 Electronics Only (Q9 Replacement Kit or R9 Retrofit Kit)
- B** = 15 & 20 Turbines, Turbine Only or w/Q9 Electronics  
05 Thru 10 Turbines w/Q1 Electronics
- C** = 15 Thru 20 Turbine w/Q1 Electronics
- D** = 10 Turbines with ANSI Flange Turbine Only or w/Q9, Q1 Electronics
- E** = 15 & 20 Turbines with ANSI Flange Turbine Only or w/Q9, Q1 Electronics

## APPLICATIONS

- Batching
- Blending
- Water
- Industrial fluids
- Plating solutions
- Ammonium
- Food and beverage processing
- Fuel Products
- Monitoring clean fluids
- Plant process water
- Chemical feed lines
- Harsh chemicals (sulfuric acid and bleach)
- DEF (Diesel Exhaust Fluid)

1 2 3 4 5 6 7

---->>>> G2 S 15 N Q9 GM B



# SPECIFICATIONS

Fitting Type:	NPT or ISO (Female) BSPT (ISO 7 designation is RC)				
	150# ANSI (S10, S15 y S20 only)				
	Tri-Clamp (Stainless Steel only) - Fitting size is one size bigger than meter size				
Meter Sizes Available:	1/2"	3/4"	1"	1-1/2"	2"
Corresponding Tri-Clamp Fitting:	3/4"	1"	1-1/2"	2"	2-1/2"
Housing Material:	316 Stainless Steel, Aluminum, PVDF				
Flow Range:	1/2" (05)	1 - 10 GPM		(3.8 - 38 L/min)	
	1/2" (05) PVDF Only	1.2 - 12 GPM		(4.5 - 45 L/min)	
	3/4" (07)	2 - 20 GPM		(7.6 - 76 L/min)	
	1" (10)	5 - 50 GPM		(19 - 190 L/min)	
	1-1/2" (15)	10 - 100 GPM		(38 - 380 L/min)	
	2" (20)	20 - 200 GPM		(76 - 760 L/min)	
Accuracy (% of Reading):	<b>Turbine Only</b>		<b>Turbine w/Computer</b>		
	1/2" (05)	± 2.0%		± 1.5%	
	3/4" (07)	± 1.5%		± 1.0%	
	1" (10)	± 1.5%		± 1.0%	
	1-1/2" (15)	± 1.0%		± 0.75%	
	2" (20)	± 1.0%		± 0.75%	
Repeatability:	± 0.1% (PVDF is ± 0.3%)				

## DIMENSIONS NOTE: Q9 Display adds 0.72 in. (18 mm) to height

### Stainless Steel Models

	S05, 1/2 in.	S07, 3/4 in.	S10, 1 in.	S15, 1 1/2 in.	S20, 2 in.
A = Height	1.4 in. (35.6 mm)	1.6 in. (40.6 mm)	1.9 in. (48.3 mm)	2.6 in. (66.0 mm)	3.1 in. (78.7 mm)
B = Width	2.0 in. (50.8 mm)	2.0 in. (50.8 mm)	2.0 in. (50.8 mm)	2.7 in. (68.6 mm)	3.4 in. (86.4 mm)
C = Length	4.2 in. (106.7 mm)	4.3 in. (109.2 mm)	4.5 in. (114.3 mm)	5.3 in. (134.6 mm)	6.3 in. (160.0 mm)

### Aluminum Models

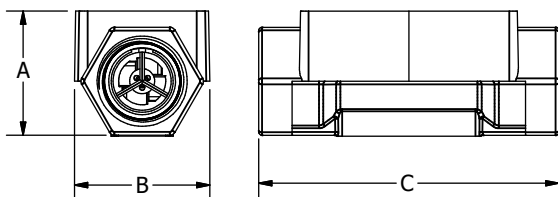
	A05, 1/2 in.	A07, 3/4 in.	A10, 1 in.	A15, 1 1/2 in.	A20, 2 in.
A = Height	1.8 in. (45.7 mm)	2.0 in. (50.8 mm)	2.2 in. (55.9 mm)	2.8 in. (71.1 mm)	3.2 in. (81.3 mm)
B = Width	2.0 in. (50.8 mm)	2.0 in. (50.8 mm)	2.0 in. (50.8 mm)	2.7 in. (68.6 mm)	3.3 in. (83.8 mm)
C = Length	4.2 in. (106.7 mm)	4.3 in. (109.2 mm)	4.5 in. (114.3 mm)	5.3 in. (134.6 mm)	6.3 in. (160.0 mm)

### PVDF Models

	P05, 1/2 in.	P10, 1 in.
A = Height	3.2 in. (81.3 mm)	3.3 in. (83.8 mm)
B = Width	2.1 in. (53.3 mm)	2.8 in. (71.1 mm)
C = Length	7.3 in. (185.4 mm)	8.1 in. (205.7 mm)

*NOTE: For representation purpose only. Actual product models vary in shape, design, etc*

*ANSI Flange and Sanitary Flange dimensions not shown. For those dimensions, please refer to product manuals or our website FLOMECmeters.com.*



<b>Pressure Rating:</b>		
<b>Stainless Steel 316 SS</b>	1,500 psi (102 bar)	
<b>Aluminum</b>	300 psi (21 bar)	
<b>ANSI Flange 316 SS</b>	Flange Rule	
<b>Sanitary Flange 316 SS</b>	Limited by fitting, clamp size, & temperature	
<b>PVDF</b>	100 psi (6.9 bar)	
<b>Operating Temperature Range:</b>	-40° F to 250° F (-40° C to 121° C)	
	(PVDF) -20° F to 180° F (-28° C to 82° C)	
<b>with Intrinsically Safe Display:</b>	0° F to +129° F (-18° C to +54° C)	
<b>Typical K-Factor:</b>	1/2" (05)	2,500 PPG (660 Pulses/L)
	3/4" (07)	1,100 PPG (291 Pulses/L)
	1" (10)	565 PPG (149 Pulses/L)
	1-1/2" (15)	215 PPG (57 Pulses/L)
	2" (20)	100 PPG (26 Pulses/L)
<b>Wetted Materials:</b>	Housing:	316 Stainless Steel or Aluminum
	Bearings:	96% Alumina Oxide Ceramic
	Shaft:	Tungsten Carbide
	Rotor:	PVDF
	Rings:	316 Stainless Steel
<b>Wetted Materials PVDF:</b>	Housing:	PVDF (15% Carbon Fiber Filled)
	Bearings & Shaft:	98% Alumina Ceramic
	Rotor:	PVDF
	Rings:	Fluorocarbon (Optional PTFE)
<b>Frequency Range:</b>	1/2" (05)	42-420 Hz @ 1-10 GPM (3.8-38 L/min) / 45-450 Hz @ 1.2-12 GPM (4.5-45 L/min) (PVDF)
	3/4" (07)	37-370 Hz @ 2-20 GPM (7.6-76 L/min)
	1" (10)	47-470 Hz @ 5-50 GPM (19-190 L/min) / 45-475 Hz @ 5-50 GPM (19-190 L/min) (PVDF)
	1-1/2" (15)	36-360 Hz @ 10-100 GPM (38-380 L/min)
	2" (20)	33-330 Hz @ 20-200 GPM (76-760 L/min)
<b>Calibration Report:</b>	Comes standard with G2 Series meters.	
	N.I.S.T. - Certification available.	

## ACCESSORIES

Part No.	Description	Part No.	Description
120077-01	FM Approved Sensor	113275-10	FM Approved Remote Kit
120077-02	ATEX Approved Sensor	125206-2	1/2 in. Teflon O-Ring for PVDF Meter (2)
125260-02	90° Display Adaptor Kit	125206-1	1 in. Teflon O-Ring for PVDF Meter (2)

## APPROVALS



ISO 22241-2 Annex C, D, E, F, G, H, I, Diesel Exhaust Fluid (DEF)/Adblue standards

